

## Microsoft Active Directory Data Protection

Active Directory has become the standard directory service in Windows organizations. Microsoft Exchange, SQL, and SharePoint are dependent on efficient backup and quick recovery of Active Directory to maintain business productivity. Human error and hardware or software failures can easily result in the corruption of Active Directory (AD) data which has a ripple effect across the Windows environment including down to the application level of Microsoft Exchange, SQL, and SharePoint. Since Active Directory is a replicated database, AD objects often get modified or deleted by mistake, faulty scripts accidentally overwrite key AD attributes, and the AD database can be easily corrupted as a result of hardware failure. An accidentally deleted user account results in lost user productivity up to several hours, or even days, while the IT administrator struggles to recover the Active Directory environment. Microsoft application dependence on Active Directory further increases the need for fast, efficient Active Directory data protection.

Any administrator who has ever had to recover Active Directory (AD) data including deleted user accounts, lost attributes, using standard tools such as Microsoft NTDSUTIL information understands the frustration and time involved with the basic recovery process. Administrators and companies who have not had to experience recovering Active Directory data using basic Active Directory Recovery Tools will face several limitations to quickly recover Active Directory data including:

- Current recovery process is tedious and difficult
- Active Directory authoritative restores require the use of command-line system tools such as Ntdsutl.
- Requires a full restore of System State which increases downtime
- Authoritative restores also require you to disconnect the Domain Controller from the network which prevents users from accessing network resources during the recovery.
- The domain controller must be rebooted at least twice, creating additional downtime and risk.
- After full recovery, Active Directory installations that have redundancy through replication must wait for large portions of the directory to replicate inbound and outbound, creating additional downtime.

## Improving Active Directory Recovery

Most Active Directory recovery jobs involve recovering from “small disasters” of lost, deleted, corrupted or overwritten user accounts, objects, and attributes. If not quickly resolved, these “small disasters” can quickly escalate into larger issues. In situations where an individual user account, object, or even an individual attribute is lost or corrupted, recovery of the entire Active Directory database is not an efficient use of time for the Administrator since recovery is only needed for individual objects.

The Symantec Backup Exec 2010 Active Directory Recovery Agent dramatically reduces the time to recover from small disasters, helping to improve employee productivity, reduce the potential for greater issues, and alleviate an IT Administrator’s aggravation associated with traditional Active Directory protection and recovery.

Only the Backup Exec 2010 Active Directory Recovery Agent leverages the innovative Granular Recovery Technology (GRT) which helps IT Administrators save time and money by giving them the ability to restore individual AD items, while Active Directory is online, including:

- Individual User Accounts
- Organizational Units (OU’s)
- Printer Objects
- Even Individual AD attributes and values including names, addresses, phone numbers, email addresses, etc

all from a fast single-pass database level backup of Active Directory.

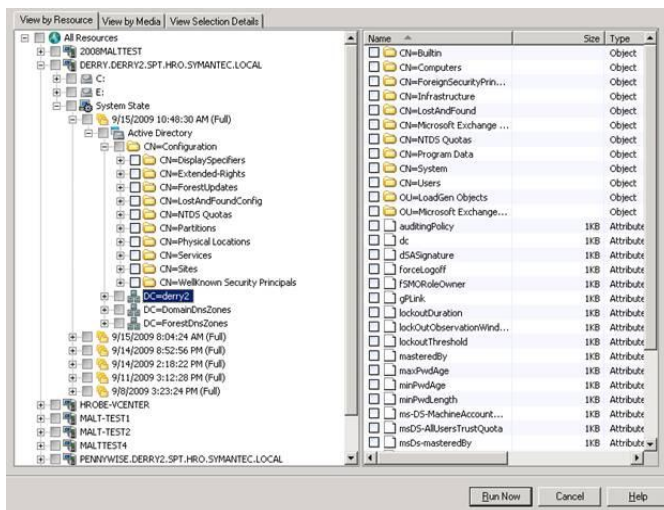
The easy to use Backup Exec interface walks Administrators through the process of identifying the necessary AD Domain Controller System State components for fast and simple backup and recovery of Active Directory objects.

### Key Business Benefits

- Online, granular recovery of individual Active Directory objects
- Restore objects without rebooting AD Domain Controllers
- Single Pass Backups for complete AD or object level recovery from single backup
- Point and Click restores.
- Centralized System State and Active Directory protection

### Platform Support

- Microsoft Windows 2008 Family (including R2)
- Microsoft Windows Server 2003 Family (including R2)
- Microsoft SBS 2008 Family
- Microsoft SBS 2003 Family (including R2)
- Microsoft Windows 2000 Server Family (SP4)



**Restores Are Simple,  
Fast, Point and Click  
Operations**

## Features and Benefits

<b>Embedded Granular Restore Technology</b>	Included GRT technology provides the ability to restore individual Active Directory objects including deleted user accounts, printers, and organizational units, down to the individual attribute level <i>without</i> restoring the entire Active Directory
<b>Single-Pass Backup with GRT</b>	Eliminate separate slow individual object level Active Directory backups forever. Complete data protection requires only one backup job saving space on vital disk and/or tape media and ensure each backup completes quickly.
<b>Online AD Recovery (no reboots required)</b>	Recover important Active Directory information while Active Directory is online.
<b>Completely Automated Object Recovery</b>	Ensure deleted AD objects to be recovered with their original IDs and correct links to other Active Directory objects, eliminating the need to re-create the IDs and broken links.
<b>Disk to Disk or Disk to Tape Backup and Recovery</b>	Flexible backup and recovery capabilities allow for backup to disk for fast recovery or backup to tape for long-term storage.

## Backup Exec Active Directory Agent Licensing

The Agent for Active Directory is designed to accommodate the needs of large and small deployments of Active Directory – whether it’s a single Domain Controller or a robust, multi-Domain Controller environment. The Backup Exec Agent for Active Directory is licensed on a *per-Domain Controller* basis.

Scenarios	Customer Environment	Licensing
<b>Protecting two Active Directory Domain Controllers</b>	Two Windows 2008 Active Directory Domain Controllers at two locations	Qty:2 of Backup Exec 2010 Active Directory Recovery Agent per Domain Controller *Note- Because of the replicated nature of Active Directory, not all Domain Controllers may need to be protected in your environment with this Agent. Agents should be purchased for key Domain Controllers where replication could be delayed.

## Integrated Data Protection

Symantec Backup Exec 2010 Agent for Exchange is one of several agents and options which enable administrators to design and easily implement a comprehensive data and system protection solution for any Windows server environment. They work together to provide system-wide protection and recoverability. Other Backup Exec 2010 agents & options include:

- |                                  |                                   |                                       |
|----------------------------------|-----------------------------------|---------------------------------------|
| • Deduplication Option           | • Exchange Email Archiving Option | • Agent for Microsoft Exchange Server |
| • Agent for Microsoft SQL Server | • Agent for Windows Systems       | • Agent for Microsoft SharePoint      |

## For More Information

Symantec Enterprise Sales Support : 800-745-6054 or visit Backup Exec on the Symantec Web Site : <http://www.backupexec.com>