

MICROSOFT SHAREPOINT DATA PROTECTION

Collaboration: the hosting and exchange of information within an organization or between a business and their customers. Today, as organizations grow, collaboration applications and tools have become a critical need for companies of all sizes. Microsoft's SharePoint products are designed to improve organizational effectiveness, enabling comprehensive content management and search capabilities, business process sharing and information-sharing across boundaries for better business insight.

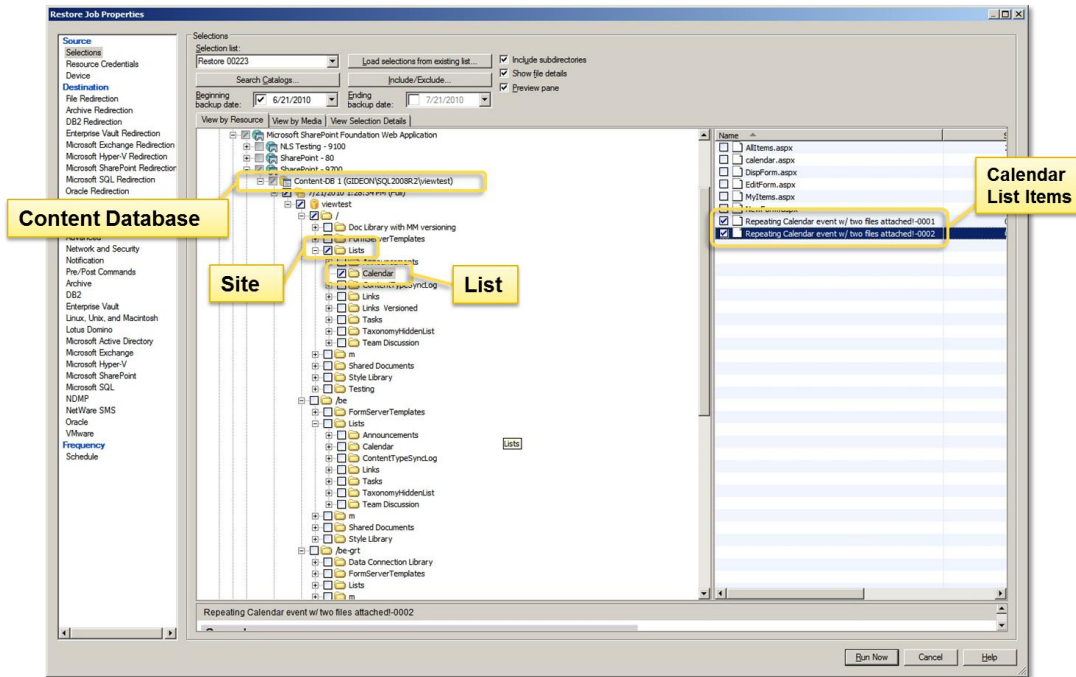
Ensuring the content within SharePoint is safely protected is paramount to a company's ongoing success. The loss of this data, even momentarily, could cause delays in effective communications both internally and externally – leading to losses in productivity and revenues. Today's information and technology administrators need reliable, easy to manage and efficient backup and recovery solutions to protect their intellectual property.

IMPROVING SHAREPOINT APPLICATION AVAILABILITY

The Backup Exec Agent for Microsoft SharePoint provides robust data protection and the ability to quickly and easily recover individual objects or the entire SharePoint farm. Since most recovery requests are granular in nature – this agent enables administrators to select only the document(s) or SharePoint objects needed from the backup job without having to recover the entire database. Typical documents include Word, Excel, PowerPoint, PDFs and even video WAV files. Typical object recovery includes sites, sub-sites, lists, documents sets (2010 only), external lists (2010 only) and list items. Each file is recovered with attributes and security fully intact. The SharePoint Agent leverages the innovative Granular Recovery Technology (GRT) which helps IT Administrators save time and money by giving them the ability to restore individual documents and objects from a single-pass database backup. GRT allows the IT Administrators to restore the documents to the original document library in the SharePoint farm or redirect the restore of documents to the file system.

Key Business Benefits

- Comprehensive data protection for SharePoint Server farms or Windows SharePoint Services
- Intuitive and easy-to-use interface makes backing up SharePoint resources painless
- Granular object recovery from a single-pass backup makes it easy and efficient to identify and recover only those documents or SharePoint objects users and Administrators need saving valuable time!



Platform Support

- Microsoft SharePoint 2010
- Microsoft Office SharePoint Server 2007
- Microsoft SharePoint Portal Server 2003
- Windows SharePoint Services (WSS) 3.0
- Windows SharePoint Services (WSS) 2.0
- Database Support - SQL Server 2000 or SQL Server 2005

The Backup Exec Agent for SharePoint protects SharePoint and Windows SharePoint Services at the database, object, and document levels. Using a 32-bit or 64-bit Backup Exec media server, this agent can protect 32-bit or 64-bit servers deployed on a Single-Server or within a Multi-Server Farm.

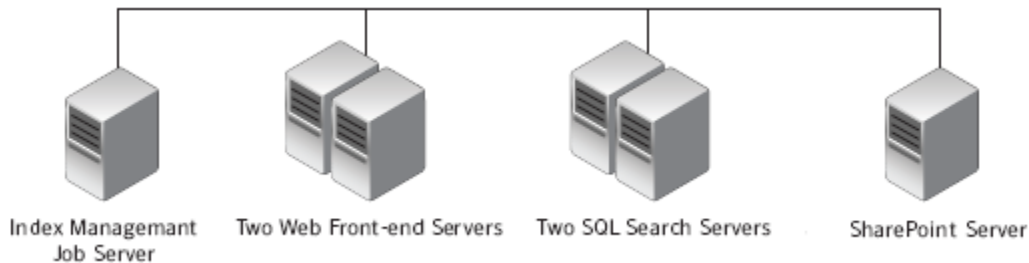
FEATURES AND BENEFITS

| | |
|---|---|
| Embedded Granular Restore Technology | Ability to recover individual documents and objects from a single full or incremental SharePoint database backup saves valuable time when restoring a single document |
| Complete 32 or 64 bit Support | Supports any combination of Windows operating systems within the farm or the Backup Exec server |

| | |
|---|---|
| Redirect Restoration | Restore SharePoint Farm components, providing users the flexibility to alternate servers in the event of a complete server failure |
| Disk to Disk or Disk to Tape Backup and Recovery | Flexible backup and recovery capabilities allow for backup to disk for fast recovery and backup to tape for long-term or off-site storage |
| Single-Pass Backup | Complete protection requires only one backup pass—saving space on vital disk and/or tape media and ensuring your backups complete quickly |
| Easy to use, integrated data protection | An integrated backup strategy for SharePoint Farm or Services easily incorporated into regularly scheduled backup routines |
| Support for mixed SharePoint Environments | Simultaneous backup and recovery of Microsoft SharePoint 2010, Microsoft Office SharePoint Server 2007 or Microsoft SharePoint Portal Server 2003 throughout a network, enabling scalable and flexible and data protection while migrating. |

SHAREPOINT DEPLOYMENT & BACKUP EXEC LICENSING

The Agent for SharePoint is designed to accommodate the needs of large and small deployments of SharePoint – whether it’s a single server with Windows SharePoint Services or a robust, multi-server SharePoint farm which leverages the power of SQL Server backend database. The setup wizard walks users through the process of identifying the farm components and adds the components to the selection list within the Backup Exec interface. Each Backup Exec Agent for SharePoint is licensed per SharePoint or SharePoint Services server environment.



Based on the complexity of your configuration, additional Backup Exec licenses may be required as described below:

| Scenarios | Customer Environment | Licensing |
|--|---|---|
| Protecting a single server SharePoint Farm or a single Windows SharePoint Services | Single server running SharePoint 2003/2007/2010 One server running SharePoint services 3.0 | Qty:1 of Backup Exec 2010 SharePoint Agent |
| Protecting a multi-server SharePoint Farm (diagram above) | Client has 4 servers in the farm performing different functions based on the roles enabled on the server. Two Front End Web servers One SQL Server containing the ConfigDB and ContentDB's One Index Management Server | Qty:1 Backup Exec 2010 Agent for SharePoint for the Content DB Qty:3 Backup Exec 2010 Agent for Windows Servers for each of the Front End Servers and Index Management Server *Only a single Agent for Microsoft SharePoint is needed per farm in order to protect the Content DB. Each additional member of the SharePoint Farm (i.e. Web Servers, Indexing Servers, Query Servers, additional DB servers etc.) will each require a separately-licensed Agent for Windows Systems (AWS). |

INTEGRATED DATA PROTECTION

Symantec Backup Exec 2010 Agent for SharePoint is one of several agents and options which enable administrators to design and easily implement a comprehensive data and system protection solution for any Windows server environment. They work together to provide system-wide protection and recoverability. Other Backup Exec 2010 agents & options include:

| | | |
|---------------------------------------|-----------------------------------|-------------------------------|
| • Agent for Microsoft Exchange Server | • Active Directory Recovery Agent | • Central Admin Server Option |
| • Agent for Microsoft SQL Server | • Agent for Windows Systems | • Desktop and Laptop Option |

FOR MORE INFORMATION

Contact Symantec Enterprise Sales Support: 800-745-6054 or visit Backup Exec on the Symantec Web Site: <http://www.backupexec.com>