

### Centralizing Backup Exec Administration

As an organization's IT infrastructure becomes distributed, so does valuable data. The data at remote locations is changing constantly and must be protected. The organization's IT management needs a data protection solution that will protect the data at remote sites with the same high level of reliability achieved in the data center.

For example, the data center employs server-knowledgeable and application-literate administrators on-site. When backup software, tape libraries, or media must be installed or maintained, an administrator can quickly do the job. However, this expertise is often not available at remote locations. Furthermore, employees at remote sites are usually not trained to create, maintain, and monitor backup jobs or investigate or trouble-shoot issues associated with backup job failure.

A backup solution must be scalable and facilitate the deployment, monitoring and management of hundreds of remote backup servers from a single console. Also since many organization's remote sites may be "cookie cutter" images of themselves, the solution should have features that minimize an administrator's management tasks.

### How the Central Admin Server Option Scales

The Central Admin Server Option (CASO) delivers a highly scalable solution for remote data protection and management for Symantec Backup Exec. CASO simplifies management by providing concise information and centralized management of multiple Backup Exec media servers across the network. In a CASO-enabled Backup Exec environment, a group of standard stand-alone Backup Exec media servers are managed and monitored from one Backup Exec media server deemed as the CAS or Central Admin Server. This CAS media server becomes the single point of administration for a CASO-based Backup Exec data protection environment. A robust and scalable solution, CASO enables centrally managed operations, load balancing, distributed catalogs, bandwidth throttling, fault tolerance, monitoring and reporting for all Backup Exec media servers whether they are in a Windows data center, distributed throughout the network or at remote offices.

The benefits of CASO are utilized by many Backup Exec customers today including Microsoft™, who uses CASO to back up and manage more than 200 Backup Exec servers worldwide, to protect more than 5000 Microsoft servers every day. Additional information on Microsoft's use of CASO is available at the following link: <http://eval.symantec.com/downloads/sus/Microsoft.pdf>.

### The Value of Central Admin Server Option Deployment

Backup Exec Central Admin Server Option allows users to remotely administer individual Backup Exec media servers from a centralized Backup Exec console. Any Backup Exec server can be configured to be a Central Admin Server by simply entering a CASO license key. This eliminates the need to install and learn a completely separate management console from the familiar Backup Exec UI. CASO simply extends the existing Backup Exec console with new functionality. After configuring a CASO server, almost all Backup Exec operations can be managed at the CASO server including;

- Centralized Backup Policy Creation and Scheduling
- Centralized Backup and Restore Job Creation and Scheduling
- Centralized Monitoring of All Backup Exec Operations
- Centralized Catalog View of All Protected Data
- Centralized Tape and Disk Backup Device Configuration and Management
- Centralized Media Management of Both Onsite and Off-Site Tape and Disk Media
- Centralized Reports and Notifications for Auditing and Compliance Needs
- Centralized Fault Tolerance and Load Balancing Across Backup Devices and Backup Exec Servers
- Enabled Device and Catalog sharing, an integral part of Backup Exec's Optimized Duplication process

Jobs created from these policies and selection lists can use the CASO job delegation feature, which automatically delegates Backup Exec jobs among the various storage devices connected to the managed media servers in the CASO environment. Jobs are automatically created and submitted to the central administration server's (CAS) job queue after a policy is applied to a selection list. CASO also manages the load across the managed media servers.

To reduce network traffic, or if there is not a persistent network connection with the CAS, managed media servers can be configured to operate independently from the CAS while maintaining a level of centralization. This is ideal for remote branch offices where network connectivity may be intermittent. Disconnected managed media servers can receive copied jobs from the CAS and be monitored by the CAS.

#### Key Business Benefits

- Simple to grow and scale, with centralized management of multiple Backup Exec servers by a central Backup Exec console
- Simply extends current Backup Exec console to reduce training needs
- Consolidated restore view and catalog replication for centralized restores
- Proactive insight with central monitoring, reporting, and notification
- Improved reliability with job load balancing and failover, maximizing hardware efficiency and operational resiliency
- Manages both Backup Exec 2010 and 12.5 Media Servers in WAN, SAN, and LAN environments
- Enables Optimized Duplication with Backup Exec 2010's Deduplication Option and multiple media servers using Client, Media Server, or Appliance deduplication

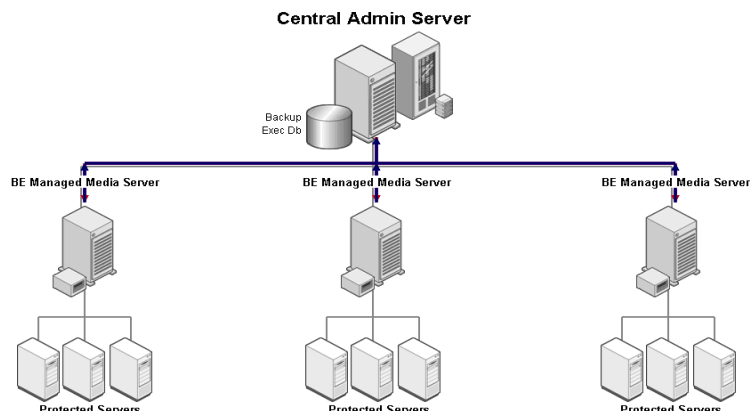
#### Platform Support

- Microsoft Windows Server 2008 (including 32-bit, x64 and R2 Editions)
- Microsoft Windows Server 2003 32x, x64 and R2 Editions)
- Microsoft Windows 2000 Server (Service Pack 4)

## How CASO Works

CASO unifies multiple, independent Backup Exec servers, providing one central point of administration and control. In a CASO-enabled Backup Exec environment, a group of standard stand-alone Backup Exec media servers are managed and monitored from one Backup Exec media server, referred to as the Central Admin Server (CAS).

CASO also enables Device Sharing between Media Servers. Each Backup Exec Media Server in a CASO environment can be configured so that Media Servers can target backups and set copies at devices attached to other Media Servers. Optimized Duplication requires this function.



## Features and Benefits

<b>Centralized Administration</b>	<ul style="list-style-type: none"> <li>• Provides single console for managing the entire Backup Exec environment.</li> <li>• Creates and delegates jobs to multiple Backup Exec media servers.</li> <li>• Defines device and media sets.</li> </ul>
<b>Operational Resiliency</b>	<ul style="list-style-type: none"> <li>• Automatically load-balances jobs across all media servers.</li> <li>• Provides job failover from one Backup Exec server to another.</li> <li>• Centralizes, distributes or replicates the catalogs for restores.</li> </ul>
<b>Proactive Insight (Reporting and Monitoring)</b>	<ul style="list-style-type: none"> <li>• Monitors all job activity dispatched by the central admin server in real time.</li> <li>• Provides holistic reporting for the entire storage environment.</li> <li>• Centrally defines notification and alert settings.</li> </ul>
<b>Disconnected Managed Media Server</b>	<ul style="list-style-type: none"> <li>• Provides flexible backup and recovery capabilities that allow for backup to disk for fast recovery as well as archiving to tape for long-term storage</li> </ul>

## Backup Exec Central Admin Server Option Licensing

A single license of the the Backup Exec Central Admin Server Option supports an unlimited number of Backup Exec servers.

Scenarios	Customer Environment	Licensing
<b>Protection for a LAN Environment</b>	5 Backup Exec servers centrally managed with CASO	Qty:5 of Backup Exec 2010 licenses, (1)Per Backup Exec Server Qty:1 of Backup Exec 2010 Central Admin Server Option License
<b>Protection for a WAN Environment (Remote)</b>	5 Backup Exec servers at remote offices managed with CASO	Qty:1 of Backup Exec 2010 licenses, (1) Per Backup Exec Server Qty:1 of Backup Exec 2010 Central Admin Server Option License
<b>Protection for a SAN Environment</b>	5 Backup Exec SAN servers centrally managed with CASO	Qty:5 of Backup Exec 2010 licenses, (1) Per Backup Exec Server Qty:1 of Backup Exec 2010 Central Admin Server Option License Qty:5 of Backup Exec 2010 SAN Shared Storage Option Licenses, (1) Per Backup Exec Server that is Sharing Backup Devices
<b>Optimized Duplication between two or more Backup Exec Media Servers using Client/Media Server Deduplication</b>	2 Backup Exec Media Servers, each with licenses for the Deduplication Option. One media server is in a Remote Office or DR facility, one is in a Data Center.	Qty:2 of Backup Exec 2010 licenses, (1) Per Backup Exec Server Qty:2 of Backup Exec 2010 Deduplication Option licenses, (1) Per Backup Exec Media Server Qty:1 of Backup Exec 2010 Central Admin Server Option License

## Integrated Data Protection

In an era of continuing data growth and the need for simple, centralized, scalable management, the Backup Exec 2010 Central Administration Server Option gives the Windows-based organizations the flexible, powerful solution to manage backups and restores across a distributed organization.

## For More Information

Symantec Enterprise Sales Support: 800-745-6054  
 Backup Exec on the Symantec Web Site: <http://www.backupexec.com>